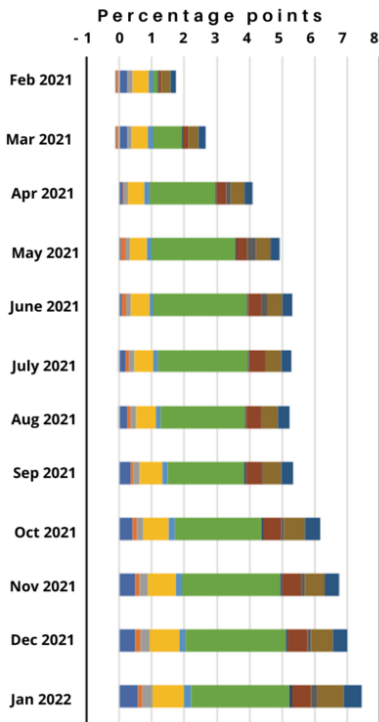


Contribution to Inflation by CPI Component

By No Author *Wed, May 4, 2022*

Contribution to Inflation by CPI Component January 2021 to January 2022



Transport (Green), Imputed rents from housing (Yellow), Utilities, upkeep of dwellings (Blue/left), Restaurants and hotels (Dark Brown) and Food (Dark Blue/right) have contributed most to inflation.

Source: OECD; Levy Economics Institute of Bard College, Public Policy Brief No. 157, 2022.